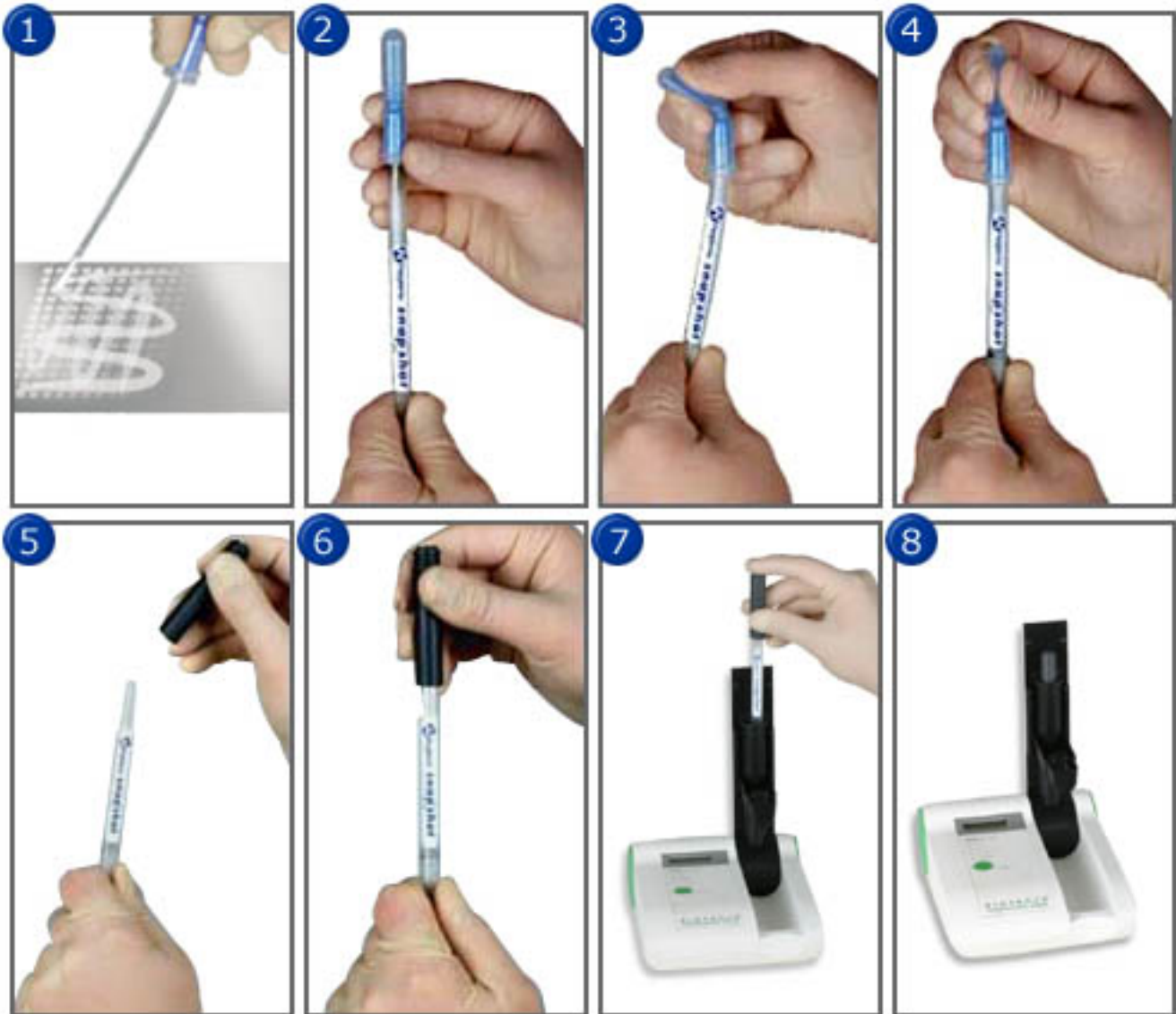


Snapshot™ with Biotrace Uni-Lite

How to Use



1. Swab sample point.
2. Place swab back in swab tube.
3. Holding the swab tube firmly, use the thumb and forefinger to break the Snap-Valve™ by bending the bulb forward and backwards.
4. Squeeze the bulb twice, expelling all liquid down the swab shaft.
5. Pull swab out of swab tube and discard swab. Liquid will be at bottom of swab tube.
6. Place cap (#BULCAP) on swab tube.
7. Place swab tube in Biotrace Uni-Lite.
8. Take reading as normal.